



Officially
Licensed
Warning Lights



HALOGEN ROTATING BEACONS
SINGLE REFLECTOR, SNAP-IN STYLE - AMBER



MODEL NUMBER	DESCRIPTION
RB6PAP	50 Watt, non-corrode base, permanent
RB6PAM	50 Watt, non-corrode base, magnetic



STROBE BEACONS
1500 SERIES ENCAPSULATED STROBE LAMPS - AMBER



MODEL NUMBER	DESCRIPTION
1502A	2 Watt Low dome, polycarbonate base, permanent
1502MA	2 Watt Low dome, polycarbonate base, magnetic



2000 SERIES ENCAPSULATED STROBE LAMPS - AMBER



MODEL NUMBER	DESCRIPTION
2004BLA	5 Watt, polycarbonate base, 4 joule, low profile, permanent
2004BHA	5 Watt, polycarbonate base, 4 joule, high profile, permanent
2004BLAM	5 Watt, polycarbonate base, 4 joule, low profile, magnetic
2004BHAM	5 Watt, polycarbonate base, 4 joule, high profile, magnetic
2012LPA	5 Watt, polycarbonate base, 8 joule, low profile, permanent
2012HPA	5 Watt, polycarbonate base, 8 joule, high profile, permanent
2012LPAM	5 Watt, polycarbonate base, 8 joule, low profile, magnetic
2012HPAM	5 Watt, polycarbonate base, 8 joule, high profile, magnetic
2012LPAV	5 Watt, polycarbonate base, 8 joule, low profile, suction cup
2022LPA	5 Watt, poly base, 19 joule w/QuadFlash, low profile, permanent
2022HPA	5 Watt, poly base, 19 joule w/QuadFlash, high profile, permanent
2022LPAM	5 Watt, poly base, 19 joule w/QuadFlash, low profile, magnetic
2022HPAM	5 Watt, poly base, 19 joule w/QuadFlash, high profile, magnetic
2022LPAV	5 Watt, poly base, 19 joule w/QuadFlash, low profile, suction cup



LED BEACONS
SELF-CONTAINED 360-LED'S - AMBER



MODEL NUMBER	DESCRIPTION
L53AP	Amber only, permanent mt., 3-3/4" high
L53AM	Amber only, magnetic mt., 3-3/4" high
L21HAP	High, permanent mt., 6-3/4" high
L21HAM	High, magnetic mt., 6-3/4" high
L32LAF	Low profile, permanent mt., 2-1/2" high
L32LAM	Low profile, magnetic mt., 2-1/2" high



EMERGENCY LIGHTING • WARNING BEACONS

PETERSON



769 SERIES SIGNAL-FLASH STROBE LIGHTS

- 12-volt, single-flash strobe light produces 150 candela/sec. brightness at 60 FPM
- Features shock resistant rubber base, encapsulated circuitry, and fresnel optics.
- Magnetic mount model includes 12' coiled cord & plug with built-in on/off switch & LED indicator.

MODEL NUMBER	DESCRIPTION
769A	Amber, 12 Volt Strobe Beacon, permanent mount
769MA	Amber, 12 Volt Strobe Beacon, magnetic mount

PETERSON



771 SERIES 774 TEARDROP SERIES REVOLVING LIGHTS

- Versatile 12-volt revolving light produces 90 flashes per minute.
- Features low-noise drive motor and polished reflector for maximum performance.
- Includes powerful magnet on base & 12-foot coiled cord with cigarette lighter plug.

MODEL NUMBER	DESCRIPTION
V771A	Amber, Economy Revolving Light, Viz-Pack
V771R	Red, Economy Revolving Light, Viz-Pack
V774A	Amber, Economy Revolving Light, Teardrop, Viz-Pack
V771R	Red, Economy Revolving Light, Teardrop, Viz-Pack



Buyers
PRODUCTS COMPANY

Magnetic-Mount Halogen Revolving Light

This 12-volt, 55-watt halogen light offers a 4-point, magnetic mount for stability and ease of use. The teardrop design utilizes a neoprene seal for corrosion resistance. It also uses coated electronics to combat moisture and vibration. The revolving light comes with a 10' coiled power cord and cigarette plug adapter. *Approx. dimensions: 8" x 6" footprint, 5" h Weight: 1.8 lbs.*

MODEL NUMBER	DESCRIPTION
RL700A	Mag-Mount Halogen Amber Light

Buyers
PRODUCTS COMPANY

Magnetic Mount



Economy Line Magnetic-Mount Ministrobe

Ultracompact design uses a center magnetic mount for temporary roof mounting. The high-powered Xenon strobe flashes at a rate of 80/minute, and is visible for miles. This ministrobe comes complete with a 10' power cord and cigarette plug adapter. *Approx. dimensions: 4" base dia. x 3" h Weight: 0.7 lbs.*

MODEL NUMBER	DESCRIPTION
SL500A	Mag-Mount Amber Mini-Strobe

Buyers
PRODUCTS COMPANY

Magnetic Mount



Magnetic-Mount Revolving Safety Light

This light is the **industry price leader!** The 12-volt teardrop light is ideal for use on vehicles where a permanent-mount light is not possible. The magnetic base secures the light while in operation, and allows you to remove the light when not in use. This revolving light comes with a 10' coiled power cord, cigarette plug adapter and a backup replacement bulb. *Approx. dimensions: 7" base dia. x 5-1/4" h Weight: 1.83 lbs.*

MODEL NUMBER	DESCRIPTION
RL650A	Mag-Mount Amber Safety Light

Buyers
PRODUCTS COMPANY



High-Visibility Strobe Lights

Buyers Strobe Lights feature a replaceable "U" shaped flash tube rated at 1.7 joules, and multi-volt operation (12-110V). Choose from permanent-mount or magnetic-mount. Magnetic-mount comes with self-coiled cord and cigarette plug adapter. *Approximate dimensions: 6" dia. x 4-3/4" height.*

MODEL NUMBER	DESCRIPTION
SL600A	Perm-Mount Amber Strobe Light
SL650A	Mag-Mount Amber Strobe Light

EMERGENCY LIGHTING • LIGHT BARS



Officially Licensed
Warning Lights
Of NASCAR®

GUARDIAN™ SERIES MINI-LIGHTBARS - AMBER

WHELEN®

Size: 6-1/4" High X 7" Wide X 17-5/16" Long
Permanent mount includes 6" pigtail -
Magnetic mount includes 8' straight cord w/ cigar plug.

MODEL NUMBER	DESCRIPTION
G1PA	55 Watt, Rotator Halogen Mini-Bar, permanent mount
G1MA	55 Watt, Rotator Halogen Mini-Bar, magnetic mount
G1VA	55 Watt, Rotator Halogen Mini-Bar, suction cup
G7PA	12 joules. 40 Watt Strobe Mini-Bar, permanent mount
G7MA	12 joules. 40 Watt Strobe Mini-Bar, magnetic mount
G7VA	12 joules. 40 Watt Strobe Mini-Bar, suction cup



Responder LP R1 Series features the new larger (CON3™) Conical Super-LED modules for an extremely low profile but much brighter warning light.



Side View

RESPONDER™ SERIES LOW-PROFILE LED MINI-BARS - AMBER

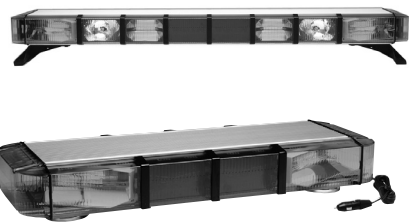
NEW!

From

WHELEN®

Size: 2-7/8" High X 6-5/16" Wide X 17" Long
Permanent mount includes 6" pigtail -
Magnetic mount includes 8' straight cord w/ cigar plug & LED Indicator

MODEL NUMBER	DESCRIPTION
R1LPPA	Six CON3 Super-LEDs Permanent Mount
R1LPMA	Six CON3 Super-LEDs Magnetic Mount
R1LPVA	Six CON3 Super-LEDs Suction Mount



NEW!

9M142000
9M148000

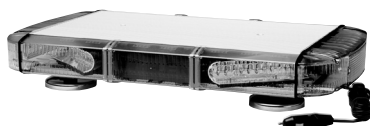


9M EDGE BAR AND MINI-EDGE LOW-PROFILE LED LIGHT BARS

WHELEN®

9M Edge Full Bar size: 3-3/4" High X 10" Wide X 55-1/8" Long
9M Mini-Edge Bar size: 3-3/4" High X 10" Wide X 28-1/4" Long
Permanent mount includes 6" pigtail -
Magnetic mount includes 8' straight cord w/ cigar plug

MODEL NUMBER	DESCRIPTION
9M140W00	55" Bar w/4 Strobes, LED Stop/Turn/Tail & Rear Work Lights
9MEDGEP	28" Bar w/4 Strobes, Contained Power Supply, Perm. Mount
9MEDGEM	28" Bar w/4 Strobes, Contained Power Supply, Mag. Mount
9MEDGEPTD2	28" Bar w/4 Strobes, Contained Power Supply, Perm. Mount with pair of take down lights
9M142000	55" Bar w/4 Strobes, Contained Power Supply, with mount
9M148000	49" Bar w/4 Strobes, Contained Power Supply, with mount



All Whelen Products
are Designed
& Manufactured
in the U.S.A.



LIBERTY™ LED COMPETITOR LOW-PROFILE LED MINI- BARS - AMBER

WHELEN®

Liberty Mini-Bar size: 2-1/2" High X 12" Wide X 22" Long
Permanent mount includes 15' Cable Standard, 12 VDC -
Magnetic mount includes 8' straight cord w/ cigar plug

MODEL NUMBER	DESCRIPTION
LB2AAAAP	22" Bar w/4 Amber LED modules, Permanent Mount
LB2AAAAM	22" Bar w/4 Amber LED modules, Magnetic Mount



MICROBAR 360

MAGNET OR PERMANENT MOUNT MICRO LIGHTBAR, 360-DEGREE STROBE VERSION

The Nova Electronics MICROBAR 360 is the first of a new breed of lightbars for the warning signal industry. The MICROBAR 360 is the first dome style lightbar to feature a built-in molded sun shield which greatly improves strobe performance during daylight hours. The MICROBAR 360 is also a super-low profile lightbar; featuring a 3.8 inch height (magnetic - 3.75" flush) and internal ultra-low fresnel dome lenses. The MICROBAR 360 is available in flush mount and magnetic mount versions.

A 30-watt strobe power supply is standard and features a variety of flash patterns and a unique cycle mode that cycles through all patterns continuously.



- UV stabilized Polycarbonate outer dome
- Rugged, glass-filled Nylon injection-molded base
- UV stabilized, bonded, Opaque sun shield
- Twin ultra-low UV stabilized Polycarbonate Fresnel domes
- 30 Watt field replaceable strobe power standard; easy install with 2 screws
- Available in Magnet or Flush mount versions
- Magnetic version features a 12-foot cord with cigarette lighter plug
- All mounting hardware included in both versions
- 1/4 inch thick mounting gasket included in flush mount version

MODEL NUMBER	DESCRIPTION
MB360F	16.9" X 7.9" X 3.75" Flush Mount
MB360M	16.9" X 7.9" X 3.8" Magnetic Mount



LED MICROBAR

LED LIGHTBAR WITH INTEGRAL SUN SHIELD

The LED MICROBAR utilizes Nova's dome style lightbar housing with an integral sun shield. The built-in molded sun shield greatly improves LED performance during the daylight hours. A 32-watt LED power supply is standard and features a variety of flash patterns including a state-of-the-art Random pattern.

The LED MICROBAR is available in 4, 6, 8 or 10 LED head versions. Field-replaceable LED heads can be purchased and added separately



- Available in 4, 6, 8 or 10 head versions
- Available in Flush mount and Magnet mount versions
- Field-replaceable LED heads and power supply
- UV stabilized Polycarbonate outer dome
- UV stabilized, bonded, opaque Polycarbonate sun shield
- Magnet mount version features a 12-foot cord with cigarette lighter plug
- Size: 16.9" X 7.9" X 3.75"

MODEL NUMBER	DESCRIPTION
LEDMBF4	4 Head, Flush Mount
LEDMBM4	4 Head, Magnetic Mount
LEDMBF6	6 Head, Flush Mount
LEDMBM6	6 Head, Magnetic Mount
LEDMBF8	8 Head, Flush Mount
LEDMBM8	8 Head, Magnetic Mount
LEDMBF10	10 Head, Flush Mount
LEDMBM10	10 Head, Magnetic Mount
LEDMBHD	Replacement Head

EMERGENCY LIGHTING • LED LIGHTHEADS



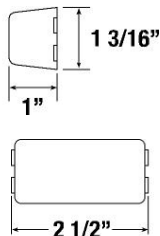
TIR3™ SERIES SUPER-LED® LIGHTHEADS

WHELEN®

Highly effective TIR3 (patent pending) Super-LED™ surface mount module with black ABS mounting flange. Optional chrome ABS mounting flange available. Tiny size, dozens of applications, Super-LED tough, low current, vibration and moisture resistant

Size: 3-1/2" (89mm) W x 1-1/8" (28mm) H x 1-1/4" (32mm) D

MODEL NUMBER	DESCRIPTION
RSA03ZCR	TIR3 Horizontal Mount - Amber
RVA03ZCR	TIR3 Vertical Mount - Amber
RSC03ZCR	TIR3 Horizontal Mount - Clear
RVC03ZCR	TIR3 Vertical Mount - Clear
RBKT1	Mounting Bracket for One TIR3 Lighthead



153S PIRANHA® LED LED ULTRA-MINI STROBING LIGHTS

PM PETERSON

- Powerful LED warning strobe piercing triple flash.
- 60 triple flashes per minute. Two different models with syncro wire allow random, synchronous or alternating flash patterns. (use a 153S-1 with a 153S-2)
- Individual parabolic reflectors direct and focus strobe flash from each of 6 high-output diodes for maximum brightness. • Features a long-lasting, solid state design with low amp draw.
- Surface mounting for quick and easy installation. • Requires mounting bracket or grommet, available separately. • Can be mounted horizontally or vertically.

MODEL NUMBER	DESCRIPTION
153SA1	LED Strobe Light - Amber, Poly Pack
153SA2	LED Strobe Light - Amber, Poly Pack
153SR1	LED Strobe Light - Red, Poly Pack
153SR2	LED Strobe Light - Red, Poly Pack
150-095	Black Bracket
B150-18	Black Grommet



VTX609 SERIES Vertex™ Super-LED® Light (patent pending)

WHELEN®

SINGLE, SELF-CONTAINED, HEMISPHERIC LIGHT

Self-contained unit using in-line combination lamp driver/flasher. Requires only a one inch hole in any composite style head light, cornering light or tail light assembly. Less than 1" tall, it may also be surface mounted to outside surfaces anywhere on the vehicle!

MODEL #	DESCRIPTION
VTX609A	Single Amber Lamp with 9' cable
VTX609C	Single Clear Lamp with 9' cable



N500 HIDE-A-LED™ LED UNDERCOVER WARNING SIGNAL

NOVA® ELECTRONICS, INC.

The Hide-A-LED N500 features a state-of-the-art, in-line molded power module that offers maintenance-free operation. • Mounts into 1" hole. • UV Stabilized Polycarbonate Lens. • Nickel Plated Housing. • Low Profile Mounting Flange. High Current LED Driver • Self-Contained Power Module. • In-Line Power Module. • 9 foot, pre-wired cable.

MODEL #	DESCRIPTION
N5W	White (Clear) N500 Module w/ 9' cable
N5A	Amber N500 Module w/ 9' cable



S450CCCC



S660CCCC

HIDE-A-WAY STROBE SYSTEMS

WHELEN®

Increase visibility. Reduce your risk of accident. Add the impact of CometFlash® strobe lighting to your vehicle. "Hide-A-Way" strobe lamps provide powerful stand alone warning protection for vehicles.

- The smallest plug-in mounted, remote, encapsulated assembly available.
- Brighter and more effective than "wig-wag" halogen flashing lights.
- Whelen's Hide-A-Way's are the smallest flange or grommet style strobe lamp assembly available. • Encapsulated for moisture and vibration resistance.
- Easy to install on flat or curved surface. Mounts into a 1" hole on the rear of any composite style headlight, cornering light or taillight assembly.

MODEL NUMBER	DESCRIPTION
S450CCCC	4 Head, 50 Watt Power Supply, 4 Clear Bulbs* with 2 - 15 ft. and 2 - 20 ft. amp connection cables
S450CCCC-D4	4 Head, 50 Watt Power Supply, 4 Clear Bulbs* with 2 - 20 ft. and 2 - 25 ft. Deutsch connection cables
S660CCCC	6 Head, 60 Watt Power Supply, 4 Clear Bulbs* with 2 - 15 ft. and 2 - 20 ft. amp connection cables
S660CCCC-D4	6 Head, 60 Watt Power Supply, 4 Clear Bulbs* with 2 - 20 ft. and 2 - 25 ft. Deutsch connection cables

* Amber bulbs can be substituted for clear for additional charge. Refer to component options below.



PSW2
SWITCH-1



SWITCH-PSEL

HIDE-A-WAY STROBE COMPONENTS POWER PACKS, BULBS, CABLES, SWITCHES

WHELEN®

Build or upgrade your own Hide-A-Way kit with these strobe system components.

PART NUMBER	DESCRIPTION
CSP450	4 Head, 50 Watt Power Supply
CSP660	6 Head, 60 Watt Power Supply
CSP690	6 Head, 90 Watt Power Supply
S30HACP	Soft "plug-in" style clear bulb, 1" diameter cutout
S30HAC	"Flange mount" style clear bulb, 1" diameter cutout
S30HA	"Flange mount" style amber bulb, 1" diameter cutout
S30HAR	"Flange mount" style red bulb, 1" diameter cutout
S30HAAD	"Flange mount" style amber bulb, w/deutsch connector
S30HACPD	"Flange mount" style clear bulb, w/deutsch connector
EXT15	Shielded 15 ft. cable w/amp connectors
EXT20	Shielded 20 ft. cable w/amp connectors
EXT20D	Shielded 20 ft. cable w/deutsch connectors
EXT25	Shielded 25 ft. cable w/amp connectors
EXT25D	Shielded 25 ft. cable w/deutsch connectors
PSW2 (Whelen)	On-Off PC-2 Switch, Momentary SPST, 15 AMP Contacts
SWITCH-1 (Nova)	On-Off PC-2 Switch, Momentary SPST, 15 AMP Contacts
4SWITCH	4 Switch Panel With PTO Light
PCC6R	Switch Box with One 40 Amp Switch and Five 20 AMP SPST Switches, Lighted
SWITCH-PSEL	On/Off control of a device and flash pattern selection



UHF2150A



UNIFLASHER

NOVA® ELECTRONICS, INC.

WHELEN®

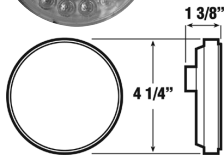
UNIVERSAL HEADLIGHT/GRILLE LIGHT FLASHERS (WIG-WAGS)

These flashers have solid-state controlled relay output for alternating flash.

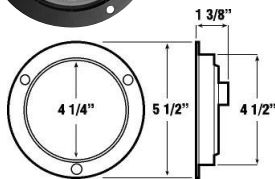
MODEL	DESCRIPTION
UHF2150A	Headlight flasher, Bi-polar for (+) or (-) ground headlight switch
UNIFLASHER	Headlight flasher, for Halogen or Incandescent (with Daytime Run Lights)

EMERGENCY LIGHTING • PLOW LIGHTS

417SA-1
417SA-2



418SA-1
418SA-2



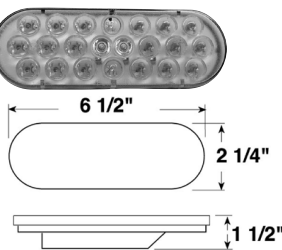
417SA / 418SA PIRANHA® LED AUXILIARY ROUND STROBING LIGHT

PM PETERSON

- Round, 4-inch, LED strobing light that may be used as auxiliary strobe or warning light.
- Offers triple-flash function and operates from 9-32 volts.
- Compatible with any 12 or 24-system.
- No separate external power source required.
- Available with random, synchronous or alternating flash patterns. (Use SA-1 with SA-2)
- Ideal for emergency vehicles, construction equipment and refuse vehicle.
- Meets SAE J1318 and J845 specifications.
- New hard-wired eliminates need for separate plug.
- Larger weld area for stronger, watertight seal.
- Flange and grommet mount versions available.

MODEL NUMBER	DESCRIPTION
417SA-1	Round LED Strobe Light - Amber, Poly Pack
417SA-2	Round LED Strobe Light - Amber, Poly Pack
418SA-1	Round LED Strobe Light - Amber, w/Flange, Poly Pack
418SA-2	Round LED Strobe Light - Amber, w/Flange, Poly Pack
426-18	Black Round Grommet, Poly Pack
B426-18	Black Round Grommet, Mfg. Pack

420SA-1 420SA-2



423SA-1 423SA-2

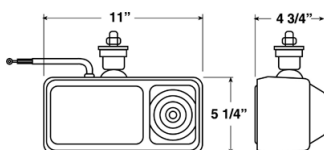


420SA / 423SA PIRANHA® LED AUXILIARY OVAL STROBING LIGHT

PM PETERSON

- Oval, LED strobing light that may be used as auxiliary strobe or warning light.
- Offers triple-flash function and operates from 9-32 volts.
- Compatible with any 12 or 24 system.
- No separate external power source required.
- Available with random, synchronous or alternating flash patterns. (Use SA-1 with SA-2)
- Ideal for emergency vehicles, construction equipment and refuse vehicles.
- Meets SAE J1318 and J845 specifications in horizontal, vertical or any position.
- New hard-wired design eliminates need for separate plug.
- Larger weld area for stronger, air and watertight seal.
- Flange and grommet mount version available.

MODEL NUMBER	DESCRIPTION
420SA-1	Oval LED Strobe Light - Amber, Poly Pack
420SA-2	Oval LED Strobe Light - Amber, Poly Pack
423SA-1	Oval LED Strobe Light - Amber, w/Flange, Poly Pack
423SA-2	Oval LED Strobe Light - Amber, w/Flange, Poly Pack
421-18	Black Oval Grommet, Poly Pack
B421-18	Black Oval Grommet, Mfg. Pack



505 BLADELIGHTS® SNOW PLOW LIGHT KIT

PM PETERSON

- Functions as head light and turn signal for snow removal vehicles.
- Features low-profile housing and halogen sealed beam. Mounts with 1/2" diameter, adjustable-ball stud.
- Meets FMVSS108 requirements.
- Easy-to-replace sealed halogen beam and turn signal bulb.
- Kits include two lights, wiring, switch, mount hardware, and easy-to-follow instructions.
- Packaged in bright, four-color display box.

MODEL NUMBER	DESCRIPTION
505K	Complete Plow Lights Kit, Display Box