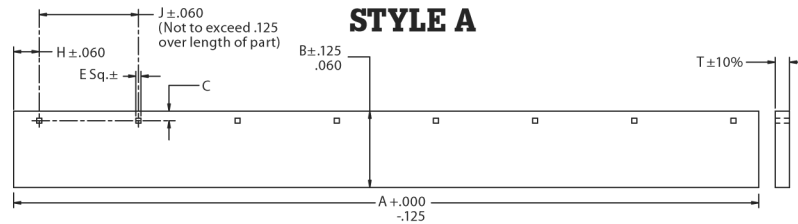


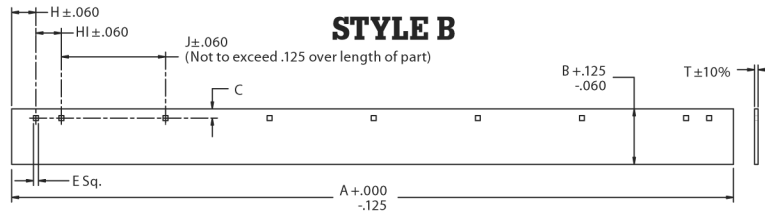
S.A.M.® SNOW PLOW REPLACEMENT PARTS

Replacement Steel Cutting Edge Information

- C-1090 Steel
- Brinell Hardness Range: 250-300



PART NO.	REPLACES OEM PART NO.	A	B	C	E	NO. OF SLOTS	H	J	T	WEIGHT
1301005	09100	78.00	6.00	2.00	.563	6	1.500	15.00	.375	49.0 lbs.
1301010	09130	72.00	6.00	1.00	.563	7	4.875	10.375	.375	46.0 lbs.
1301015	09131	78.00	6.00	1.00	.563	8	2.6875	10.375	.375	49.0 lbs.
1301016	—	78.00	6.00	1.00	.563	8	2.6875	10.375	.500	66.2 lbs.
1301020	09132	84.00	6.00	1.00	.563	7	4.6875	12.4375	.375	53.0 lbs.
1301021	—	84.00	6.00	1.00	.563	7	4.6875	12.4375	.500	62.0 lbs.
1301035	09133	96.00	6.00	1.00	.563	8	4.4687	12.4375	.500	81.0 lbs.
1301040	09134	102.00	6.00	1.00	.563	9	1.250	12.4375	.500	86.0 lbs.
1301025	09796	90.00	6.00	1.00	.563	8	1.4687	12.4375	.375	57.0 lbs.
1301030	HD09796HD	90.00	6.00	1.00	.594	8	1.4687	12.4375	.500	57.0 lbs.
1301210	49070	84.00	6.00	1.00	.563	8	2.625	11.250	.375	54.0 lbs.
1301220	49080	96.00	6.00	1.00	.563	8	2.500	13.00	.375	61.0 lbs.
1301245	58811	72.00	6.00	3.00	.563	7	2.250	11.250	.375	46.0 lbs.
1301255	58813	84.00	6.00	3.00	.563	8	2.625	11.250	.375	53.0 lbs.
1301265	58815	96.00	6.00	3.00	.594	8	2.500	13.00	.500	81.0 lbs.
1301235	49089	96.00	6.00	1.00	.594	8	2.500	13.00	.500	81.0 lbs.
1301300	5532	90.00	6.00	1.00	.563	8	1.4375	12.4375	.375	57.0 lbs.
1301301	—	90.00	6.00	1.00	.563	8	1.4375	12.4375	.625	65.0 lbs.
1301305	5533	96.00	6.00	1.00	.594	8	4.4687	12.4375	.500	81.0 lbs.
1301306	—	96.00	6.00	1.00	.594	8	4.4687	12.4375	.625	90.0 lbs.
1303510	96100275	80.00	6.00	1.75	.563	10	4.00	8.00	.375	67.5 lbs.
1303515	96100237	90.00	6.00	1.75	.563	12	1.000	8.00	.500	76.4 lbs.
1303520	96100239	96.00	6.00	1.75	.563	12	4.000	8.00	.500	81.5 lbs.



PART NO.	REPLACES OEM PART NO.	A	B	C	E	NO. OF SLOTS	H	HI	J	T	WEIGHT
1301315	3507	120.00	6.00	1.50	.703	12	3.00	3.00	12.00	.500	101.0 lbs.
1301310	5534	108.00	6.00	1.25	.703	11	3.00	3.00	12.00	.500	91.0 lbs.
1301311	—	108.00	6.00	1.25	.703	11	3.00	3.00	12.00	.625	100.0 lbs.
1301050	07235	120.00	6.00	1.25	.703	12	3.00	3.00	12.00	.500	101.0 lbs.
1301045	07259	108.00	6.00	1.25	.703	11	3.00	3.00	12.00	.500	91.0 lbs.
1301200	49066	78.00	6.00	1.00	.563	8	2.625	8.25	11.25	.375	49.0 lbs.
1301205	49068	78.00	6.00	1.00	.563	8	2.625	8.25	11.25	.375	49.0 lbs.
1301215	49076	90.00	6.00	1.00	.563	8	2.625	14.25	11.25	.375	57.0 lbs.
1301225	49086	102.00	6.00	1.00	.594	8	2.50	16.00	13.00	.500	86.0 lbs.
1301250	58812	78.00	6.00	3.00	.563	8	2.625	8.25	11.25	.375	49.0 lbs.
1301260	58814	90.00	6.00	3.00	.563	8	2.625	14.25	11.25	.375	57.0 lbs.
1301270	58816	102.00	6.00	3.00	.594	8	2.50	16.00	13.00	.500	87.0 lbs.
1301275	58817	108.00	6.00	1.50	.703	11	3.00	3.00	12.00	.500	92.0 lbs.
1301280	58818	120.00	6.00	1.50	.703	12	3.00	3.00	12.00	.500	101.0 lbs.
NEW 1301281	—	120.00	6.00	1.50	.703	12	3.00	3.00	12.00	.625	126.0 lbs.
1301230	49088	90.00	6.00	1.00	.594	8	2.625	14.25	11.250	.500	76.0 lbs.
1301240	49251	108.00	6.00	1.50	.594	10	2.500	3.00	16.00	.500	92.0 lbs.
1303530	96106376	80.00	6.00	1.75	.594	8	2.00	8.00	12.00	.375	67.5 lbs.
1303535	96106668	90.00	6.00	1.75	.594	9	2.00	7.00	12.00	.375	76.0 lbs.
	96106336										
1303540	96106337	96.00	6.00	1.75	.563	9	2.00	10.00	12.00	.500	81.0 lbs.
	96106669										

S.A.M.® SNOW PLOW REPLACEMENT PARTS

Rubber Cutting Edges

All rubber cutting edges are furnished with 3"-long slots for adjustment. Allow 10 days for fabrication of nonstock rubber cutting edges.

For MEYER® Snowplows

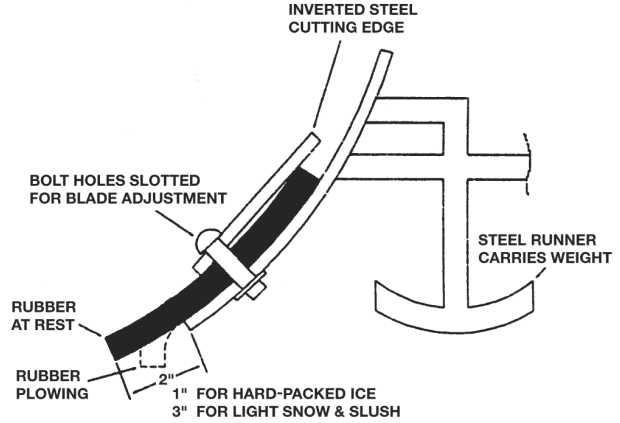
Includes Mounting Hardware

PART NO.	DESCRIPTION	REPLACES OEM PART NO.	SHIPPING WEIGHT
1312005	Two Meter, 1" x 6" x 78"	08186	24.5 lbs.
1312010	ST-78, 1-1/2" x 8" x 78"	08187	39.5 lbs.
1312015	ST-84, 1-1/2" x 8" x 84"	08188	43.0 lbs.
1312020	ST-90/C-7.5, 1-1/2" x 8" x 90"	08189	48.0 lbs.
1312025	C-8, 1-1/2" x 8" x 96"	08190	48.5 lbs.
1312030	C-8.5, 1-1/2" x 8" x 102"	08191	59.7 lbs.
1312035	HM-9, 1-1/2" x 10" x 108"	08192	78.0 lbs.
1312040	HM-10, 1-1/2" x 10" x 120"	08193	83.0 lbs.

For WESTERN® Snowplows

Includes Mounting Hardware

PART NO.	DESCRIPTION	REPLACES OEM PART NO.	SHIPPING WEIGHT
1312105	6-1/2' Standard, 1" x 6" x 78"	608261	25.4 lbs.
1312110	7' Standard, 1-1/2" x 8" x 84"	608262	43.0 lbs.
1312115	7-1/2' Std., 1-1/2" x 8" x 90"	608263	44.0 lbs.
1312120	8' Standard, 1-1/2" x 8" x 96"	608291	30.3 lbs.
1312125	8-1/2' Std., 1-1/2" x 8" x 102"	608292	59.7 lbs.
1312130	9' Std., 1-1/2" x 10" x 108"	608321	78.0 lbs.
1312135	10' Std., 1-1/2" x 10" x 120"	608323	87.0 lbs.



Custom-Cut Lengths

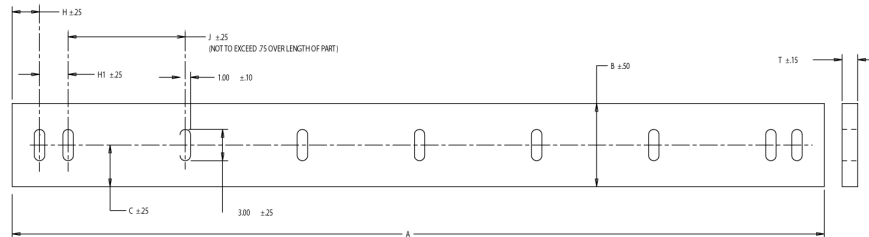
Price includes cutting to length and punching slots.

Pricing subject to change.

*Requires detailed drawing from customer.

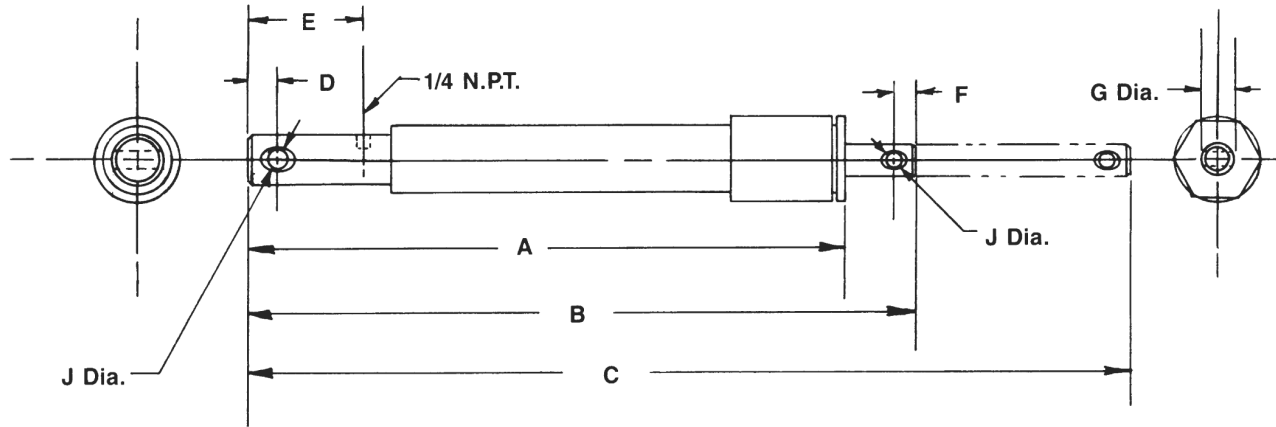
DESCRIPTION	SHIPPING WEIGHT	
1" x 6"		
1-1/2" x 8"		
1-1/2" x 10"		
1-1/2" x 12"		
PART NO.	DESCRIPTION	SHIPPING WEIGHT
FCB063011400	Zinc Carriage Bolt, 5/8-11 x 4, Grade 5	.20 lbs. NEW
FNE063011069	Nylon Lock Nut, 5/8"-11 Zinc	.08 lbs. NEW

Replacement Rubber Cutting Edge Information



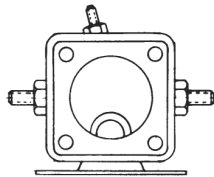
PART NO.	REPLACES OEM PART NO.	A	B	C	NO. OF SLOTS	H	HI	J	T	WEIGHT
1312105	608261	78.00	6.00	3.00	8	2.625	8.25	11.25	1.00	25.4 lbs.
1312115	608263	90.00	8.00	4.00	8	2.625	14.25	11.25	1.50	44.0 lbs.
1312125	608292	102.00	8.00	4.00	8	2.500	16.00	13.00	1.50	59.7 lbs.
1312226		96.00	10.00	5.00	10	1.500	3.00	12.4375	1.50	69.3 lbs.
1312130	608321	108.00	10.00	5.00	11	3.00	3.00	12.00	1.50	78.0 lbs.
1312135	608323	120.00	10.00	5.00	12	3.00	3.00	12.00	1.50	87.0 lbs.
1312035	08192	108.00	10.00	5.00	11	3.00	3.00	12.00	1.50	78.0 lbs.
1312040	08193	120.00	10.00	5.00	12	3.00	3.00	12.00	1.50	83.0 lbs.
1312230	5534	108.00	10.00	5.00	11	3.00	3.00	12.00	1.50	78.0 lbs.

Replacement Cylinder Information

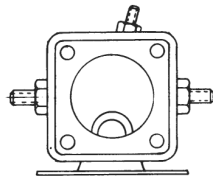


PART NO.	REPLACES OEM PART NO.	BORE	STROKE	A	B	C	D	E	F	G DIA.	J DIA.	PORT LOCATION	WEIGHT	COLOR
1303550	96100085	1-1/2"	4"	9-9/16"	11-9/16"	15-9/16"	3/4"	3"	3/4"	1-1/2"	3/4"	90°	15.3 lbs.	Black
1303700	96106077	1-1/2"	3-7/8"	8-1/2"	11-1/2"	15-3/8"	3/4"	2"	1/2"	1-1/2"	3/4"	90°	13.3 lbs.	Black
1304305	A318	1-1/2"	10"	16-5/8"	18-3/4"	28-3/4"	3/4"	2-11/16"	3/4"	1-1/2"	1"	Inline	13 lbs.	Black
1304300	A3660	1-1/2"	12"	18-1/2"	20-3/4"	32-3/4"	3/4"	2-5/8"	3/4"	1-1/2"	1"	90°	14.5 lbs.	Black
1304310	A5166	2"	16"	22-9/16"	24-13/16"	40-13/16"	3/4"	2-9/16"	3/4"	2"	1-1/4"	90°	28.5 lbs.	Black
1304010	05437	1-1/2"	12"	17-11/16"	19-1/2"	31-1/2"	3/4"	2-1/8"	3/4"	1-1/2"	5/8"	Inline	14 lbs.	Yellow
1304015	05752	2"	12"	17-1/4"	19-1/2"	31-1/2"	3/4"	2-3/16"	3/4"	1-5/8"	5/8"	Inline	21 lbs.	Yellow
1304005	05810	1-1/2"	10"	15-1/2"	17-11/16"	27-11/16"	3/4"	2-1/8"	3/4"	1-1/2"	5/8"	Inline	12.5 lbs.	Yellow
1304020	05984	1-1/2"	6"	11-7/16"	13-7/8"	19-7/8"	3/4"	2-1/8"	3/4"	1-1/8"	5/8"	Inline	9.25 lbs.	Yellow
1304210	25200	1-1/2"	6"	12-9/16"	14-7/16"	20-7/16"	3/4"	2-11/16"	3/4"	1-1/2"	3/4"	Inline	10.5 lbs.	Black
1304200	25209	1-1/2"	10"	16-5/8"	18-1/2"	28-1/2"	1"	2-3/4"	3/4"	1-1/2"	1"	Inline	13 lbs.	Black
1304215	25210	2"	6"	12-9/16"	14-11/16"	20-3/4"	3/4"	2-9/16"	3/4"	2"	3/4"	Inline	16.25 lbs.	Black
1304220	25878	2"	16"	22-9/16"	24-13/16"	40-13/16"	3/4"	2-9/16"	3/4"	2"	1"	Inline	28.5 lbs.	Black
1304205	56102	1-1/2"	10"	16-9/16"	18-3/4"	28-3/4"	3/4"	2-11/16"	3/4"	1-1/2"	3/4"	90°	13.25 lbs.	Black
1304100	81700020	1-1/2"	10"	16-5/8"	18-3/4"	28-3/4"	3/4"	2-11/16"	3/4"	1-1/2"	1"	90°	13 lbs.	Black
1304217	56709	2"	10"	16.51"	18.93"	28.93"	3/4"	1.71"	3/4"	1-1/2"	1"	90°	15 lbs.	Black

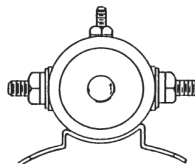
Replacement Solenoid Information



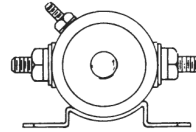
STYLE 1



STYLE 2



STYLE 3



STYLE 4

GROUNDED

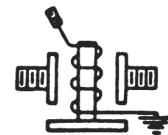


FIG. 5

PART NO.	DESCRIPTION	REPLACES OEM PART NO.	STYLE	WIRING DIAGRAM	CONSTRUCTION	DUTY
1306070	Meyer®-Type Solenoid	15370	1	5	Plastic Case	Intermittent
1306300	Western®-Type Solenoid	25634	2	6	Plastic Case	Intermittent
1306305	Western®-Type Solenoid, Heavy-Duty	56131	4	6	Steel Case	Continuous
1306505	Monarch®-Type Solenoid	63336	3	6	Steel Case	Continuous
1306510	Monarch®-Type Solenoid	63427	3	5	Steel Case	Continuous
1306440	Fisher®-Type Solenoid	3981	3	6	Steel Case	Continuous

INSULATED

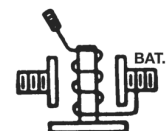
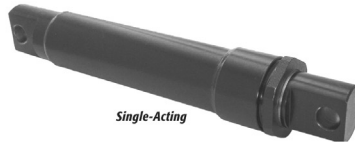
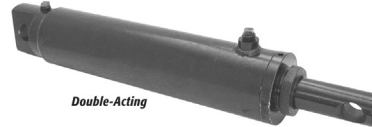


FIG. 6

S.A.M.® SNOW PLOW REPLACEMENT PARTS



Single-Acting

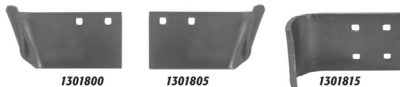


Double-Acting

Single- & Double-Acting Hydraulic Cylinders for Highway Snowplows

PART NO.	DESCRIPTION	BORE	STROKE	ACTING	PIN EYE	PORT SIZE	PORT LOCATION	ROD FLAT	DIM CLOSED	DIM OPEN	OEM REFERENCE
1304505	Standard, 1-1/2" x 10"	1-1/2"	10"	Single	1-1/64"	1/4" NPT	Inline	1-1/2"	17"	27"	STD.
1304510	Standard, 2" x 10"	2"	10"	Single	1"	1/4" NPT	Inline	1-1/2"	17-1/4"	27-1/4"	STD.
1304515	Standard, 2-1/2" x 10"	2-1/2"	10"	Single	1"	3/8" NPT	90°	1-1/2"	18"	28"	STD.
1304520	Standard, 3" x 10"	3"	10"	Single	1-1/64"	3/8" NPT	90°	1-1/2"	18"	28"	STD.
1304530	Replaces Gledhill, 2-1/2" x 10"	2-1/2"	10"	Single	1-1/16"	3/8" NPT	90°	1-1/2"	17-7/8"	27-7/8"	PD832
1304535	Replaces Gledhill, 3" x 10"	3"	10"	Single	1-1/16"	3/8" NPT	90°	1-1/2"	18-1/4"	28-1/4"	PD937
1304545	Replaces Henke, 3" x 9-1/2"	3"	9 1/2"	Double	1"	3/8" NPT	90°	1-1/2"	19-1/2"	29-1/2"	7080104
1304515	Replaces Henke, 2-1/2" x 10"	2-1/2"	10"	Single	1"	3/8" NPT	90°	1-1/2"	18"	28"	7080101
1304510	Replaces Henke, 2" x 10"	2"	10"	Single	1"	1/4" NPT	Inline	1-1/2"	17-1/4"	27-1/4"	7080103
1304510	Replaces Good Roads, 2" x 10"	2"	10"	Single	1"	1/4" NPT	Inline	1-1/2"	17-1/4"	27-1/4"	61200344
1304515	Replaces Good Roads, 2-1/2" x 10"	2-1/2"	10"	Single	1"	3/8" NPT	90°	1-1/2"	18"	28"	62100383
1304520	Replaces Good Roads, 3" x 10"	3"	10"	Single	1-1/64"	3/8" NPT	90°	1-1/2"	18"	28"	62101007
1304550	Replaces Good Roads, 3" x 10"	3"	10"	Double	1-1/64"	3/8" NPT	90°	1-1/2"	20"	30"	99806239
1304505	Replaces Schmidt (Wausau), 1-1/2" x 10"	1-1/2"	10"	Single	1-1/64"	1/4" NPT	Inline	1-1/2"	17"	27"	W9C03493
1304510	Replaces Schmidt (Wausau), 2" x 10"	2"	10"	Single	1"	1/4" NPT	Inline	1-1/2"	17-1/4"	27-1/4"	W9C04057
1304505	Replaces Valk, 1-1/2" x 10"	1-1/2"	10"	Single	1-1/64"	1/4" NPT	Inline	1-1/2"	17"	27"	CS1510
1304510	Replaces Valk, 2" x 10"	2"	10"	Single	1"	1/4" NPT	Inline	1-1/2"	17-1/4"	27-1/4"	CS2010
1304515	Replaces Valk, 2-1/2" x 10"	2-1/2"	10"	Single	1"	3/8" NPT	90°	1-1/2"	18"	28"	CS2510
1304520	Replaces Valk, 3" x 10"	3"	10"	Single	1-1/64"	3/8" NPT	90°	1-1/2"	18"	28"	CS3010
1304555	Replaces Valk, 4" x 10"	4"	10"	Double	1-1/64"	3/8" NPT	90°	2"	20"	30"	CD4010

Curb Guards



Protects your snowplow from damage caused by contact with curbs. Easy to install on any plow with "Highway Punch Plate Pattern" hole style. Constructed of heavy-duty 1/2" steel. Fits most 9' plows and all 10' plows. Dimensions: 11-1/2" W x 5-7/8" H

PART NO.	DESCRIPTION
1301800	Curb Guard (Driver)
1301805	Curb Guard (Curbside)
1301815	Curb Guard, Universal, 6" wide
1301816	Curb Guard, Universal, 8" wide



Electric Unit with Push Button Valves

A complete power unit, featuring a pre-wired rocker switch control panel. The control panel provides 4-way/3-way finger tip control for Power Up, Hold, and Gravity Down of the lift cylinder; as well as Power Reverse for exact angling position. The safety by-pass protects the angle cylinder in the event of a collision with a hidden object. This horizontal-mount power unit features a 1.3-quart reservoir. **This unit replaces B683 and B693.**

PART NO.	DESCRIPTION	SHIPPING WEIGHT
PU3593	Electric Unit w/ Push Button Valves	34 lbs.

Electric Unit Replacement Solenoids

PART NO.	DESCRIPTION	SHIPPING WEIGHT
1306505	Insulated - fits 5007, 5003, 683	0.8 lbs.
1306510	Grounded - fits 693	0.9 lbs.

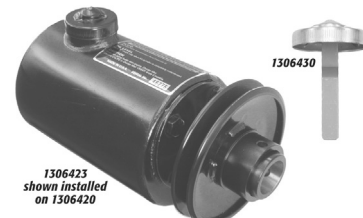


Rol-A-Blade Caster Set

Easily store your plow out of the way with this 3-piece caster set (3 Dollies per Set)

- Molded polymer surface prevents corrosion and damage to your cutting edge
- Heavy-duty powder coated base
- Independent casters are replaceable
- Locking casters prevent unintended rolling
- Shipping wt. 8 lbs. per set of 3. **Capacity: 350 lbs. per dolly**
- Approx. size of one: 6.25" sq. x 4.75" H back, 3.5" H front

PART NO.	DESCRIPTION
1310410	Rol-A-Blade Caster Set



Hydraulic Pump in Reservoir

An economical source of hydraulic power delivers 1.26 GPM @ 1000 RPM. Max. RPM 3450. Built-in relief valve set at 1800 PSI. 1/2" keyed shaft with 1/2-20 UNF-2A Thd. Reservoir is 4-1/2" Dia. x 6-1/2" L.

PART NO.	DESCRIPTION	SHIPPING WEIGHT
1306420	Pump/Reservoir, 291 CIR	10.0 lbs.
1306423	Clutch 4" for 1306420	3.0 lbs.
1306425	Filtration Kit for 1306420, Compact Design, Full-Size w/ Replaceable Element	5.6 lbs.
1306430	Replacement Cap & Dipstick	